



[SCANDURRA]

FOUNDED IN MILAN IN 2001, SCANDURRA STUDIO BRINGS TOGETHER AN INTERDISCIPLINARY TEAM OF OVER 60 PROFESSIONALS.

THE STUDIO DEVELOPS PROJECTS IN ARCHITECTURE, URBAN REGENERATION AND DESIGN, EXPLORING THE RELATIONSHIPS BETWEEN BUILDINGS, CITIES AND COMMUNITIES.





THE STUDIO OPERATES THROUGH AN APPROACH THAT COMBINES STRATEGIC RESEARCH, CONTEXTUAL ANALYSIS AND TECHNICAL AND OPERATIONAL OVERSIGHT. A STRUCTURED ARCHIVE, A DEPARTMENT DEDICATED TO RESEARCH AND DEVELOPMENT, AND A TEAM FOCUSED ON CONSTRUCTION ASPECTS SERVE AS PRACTICAL TOOLS FOR GUIDING DESIGN DECISIONS AND ENSURING THEIR CONSISTENCY AND QUALITY.

manifesto

■ ARCHITECTURE BEGINS WHEN IT ENTERS PEOPLE'S LIVES ■ WE CREATE THE CONDITIONS FOR THIS TO HAPPEN IN A RESPONSIBLE AND SUSTAINABLE WAY ■ WE ATTUNE OURSELVES TO PLACES BEFORE TRANSFORMING THEM AND ANTICIPATE WHAT IS NOT YET VISIBLE ■ WE WORK WITH TIME AS A DESIGN MATERIAL, SO THAT ARCHITECTURE FINDS ITS BALANCE WITHIN BROADER URBAN, SOCIAL AND ENVIRONMENTAL PROCESSES ■ WE CONCEIVE OF EVERY BUILDING AS A LIVING ORGANISM, CAPABLE OF INFLUENCING BEHAVIOUR, SHAPING RELATIONSHIPS AND REDEFINING THE WAY A COMMUNITY IDENTIFIES ITSELF WITHIN SPACE ■ THE VALUE OF ARCHITECTURE IS MEASURED BY WHAT IT ENABLES TO HAPPEN.

**THE METHOD INTEGRATES CULTURE
AND MATERIALS THROUGH A
MULTIDISCIPLINARY APPROACH,
TRANSFORMING THE PROJECT INTO A
PRACTICAL AND STRATEGIC TOOL.**

**THROUGH ADVANCED WORKFLOWS AND
INTEGRATED PROCESS MANAGEMENT
— FROM STRATEGIC PLANNING TO
CONSTRUCTION — THE FIRM ENSURES
QUALITY CONTROL, ADHERENCE TO
SCHEDULES AND COST MANAGEMENT,
THEREBY REDUCING UNCERTAINTIES AND
ENHANCING THE VALUE OF THE PROJECT.**

method





workflow

AN INTEGRATED APPROACH ENSURES
CONTINUITY, COORDINATION AND
OVERSIGHT THROUGHOUT ALL STAGES:

- CONCEPT
- DESIGN DEVELOPMENT
- PERMITTING
- CONSTRUCTION

client

SCANDURRA STUDIO

construction

health and safety management

site management

sustainability expert

specialized site manager

acoustic

artistic direction

MEP

structural engineer

integrated design

architectural design

interior design

fire safety

landscape

quantity surveyor

lighting design

health and safety management

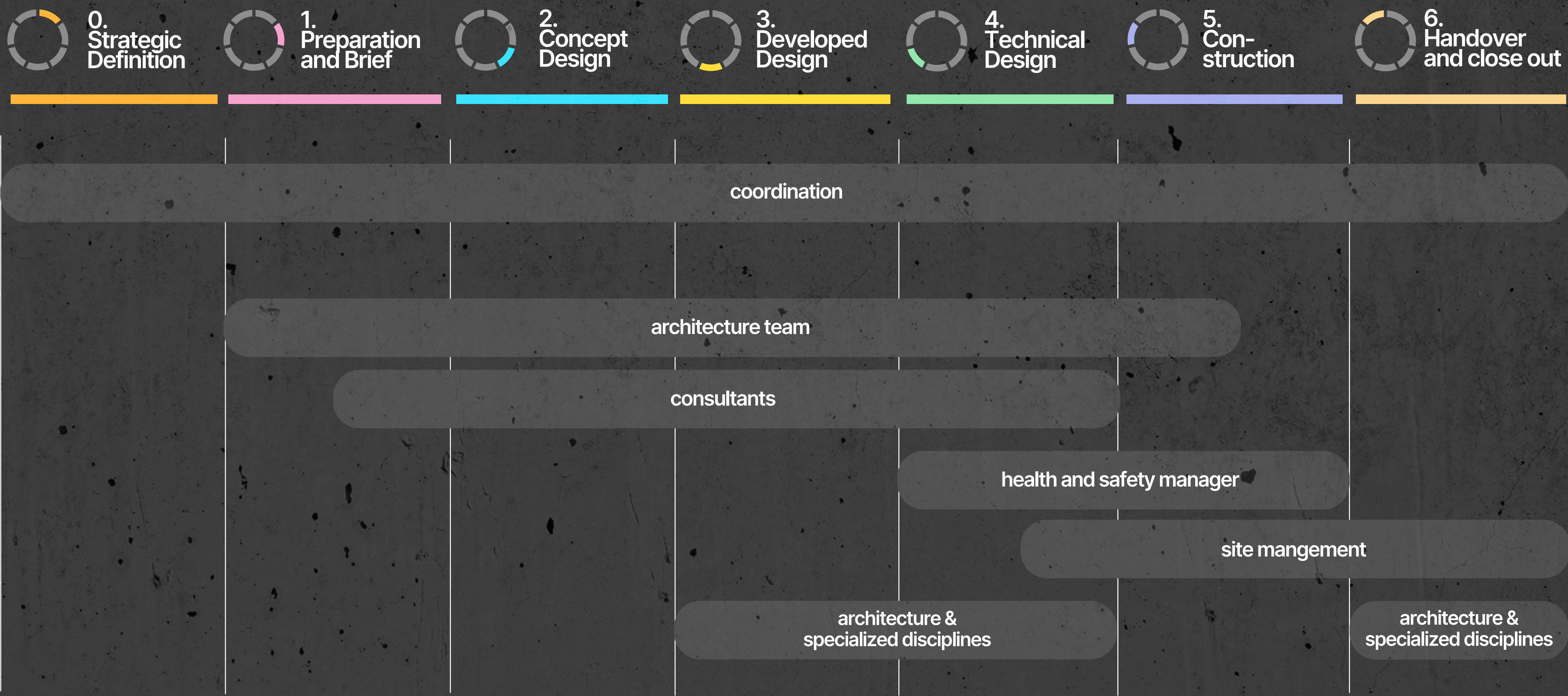
architectural design

remediation

specialized disciplines

permitting

SCANDURRA STUDIO MANAGES THE ENTIRE DESIGN PROCESS, ACTING AS THE CLIENT'S SOLE POINT OF CONTACT.



backstage








SCANDURRA BACKSTAGE IS THE STUDIO'S RESEARCH HUB, WHERE ARCHITECTS, DESIGNERS AND CONSULTANTS WORK TOGETHER TO OBSERVE THE CULTURAL, SOCIAL AND TECHNOLOGICAL CHANGES THAT ARE TRANSFORMING THE WAY WE LIVE.

A LIVING ARCHIVE DESIGNED TO ANTICIPATE FUTURE SCENARIOS, IDENTIFY EMERGING NEEDS AND TRANSLATE RESEARCH INTO PRACTICAL TOOLS.

SCANDURRA BACKSTAGE IS THE PLACE WHERE THE STUDIO'S DESIGN METHODOLOGY IS CONSTANTLY RENEWED AND WHERE THE IDEAS THAT GO INTO THE PROJECTS TAKE SHAPE.



awards

	DNA PARIS DESIGN AWARDS 2025	NEW	<i>winner</i>
	THE PLAN AWARD 2025	NEW	<i>honorable mention</i>
	ICONIC AWARDS - ARCHITECTURE 2024	SPIGA26	<i>best of best</i>
	ICONIC AWARDS - PRODUCT 2024	LAMPADA ROMA	<i>winner</i>
	BLT AWARDS 2024	SPIGA26	<i>honorable mention</i>
	BIG SEE INTERIOR DESIGN 2024	ARCO APPARTAMENTO 2.2	<i>winner</i>
	GLOBAL DESIGN AWARDS 2024	LAMPADA FLUDD	<i>winner</i>
	TILE COMPETITION 2024	SPIGA26	<i>winner</i>
	100 PROGETTI ITALIANI 2024	ARCO	<i>winner</i>
	FUNDACIÓ MIES VAN DER ROHE 2015	EXPO GATE	<i>finalist</i>
	MEDAGLIA D'ORO 2012	ZURICH HEADQUARTERS	<i>finalist</i>
	FUNDACIÓ MIES VAN DER ROHE 2011	ZURICH HEADQUARTERS	<i>nominée</i>
	XXII COMPASSO D'ORO 2009	MEDAGLIA D'ORO TRIENNALE	<i>nominée</i>
	XX COMPASSO D'ORO 2004	PIERO PORTALUPPI	<i>2nd place</i>





**BASED IN MILAN AND WITH PROJECTS
ACROSS EUROPE AND THE MIDDLE EAST, THE
FIRM OPERATES IN COMPLEX INTERNATIONAL
CONTEXTS, ADAPTING ITS APPROACH TO
LOCAL CONDITIONS WHILST MAINTAINING A
GLOBAL STRATEGIC VISION.**

presence

EUROPE

- MILAN
- VENICE
- ROME
- BELLUNO
- QUERO
- PADUA
- VICENZA
- THIENE
- BOLOGNA
- VARESE
- PALERMO
- VERONA
- PARATICO
- TURIN
- AMALFI
- NAPLES
- MONZA
- CUNEO
- SASSUOLO
- RIMINI
- COPENHAGEN
- LONDON
- FRANKFURT
- PARIS
- STOCKHOLM
- ZURICH
- LUGANO
- GOTEMBORG
- COLONIA
- BERLIN
- VILNIUS
- KAUNAS
- KIEV

ASIA

- SHANGHAI
- BEIJING
- UMM AL-QAYWAYN
- TAICHUNG
- HANOI
- SEOUL
- TIENTSIN

AMERICA

- NEW YORK
- LAS VEGAS

OCEANIA

- MELBURNE



clients

CENTRO
PECCI
PRATO

Milano
Comune
di Milano

COIMA

Fondazione
ARENA DI VERONA

LOTTE

SKIRA

Borio
Mangiarotti

PROGER
engineering & management

ARDIAN

linea
light
group

BlueStone

EDISON

Brindisi LNG

ABB

FW

ifi

LA TRIENNALE DI MILANO

iGuzzini

ACCURSIO

GRUPPO MAEL

sorgenia

ZURICH

2015
MILANO 2015

PALLADIO
MUSEUM

Europa Risorse

Hines

GENERALI

co.ri.fer.

APTAFIN

IULM

savills

3F Filippi

URM
LIETUVOS RESPUBLIKOS
UZSIENIO REIKALŲ
MINISTERIJA

la Biennale di Venezia
Arte
Architettura
Cinema
Danza
Musica
Teatro
Archivio Storico

ESTEL

KRYALOS

EUROMILANO

KERVIS

LUCE
PLAN

PANZERI

A in

CASTELLO
SGR

POHL
IMMOBILIEN

GLOBE

NH
HOTELS

Green Stone
FUNDS

BG GROUP

CINI & NILS

FONDAZIONE
PIERO
PORTALUPPI

REGIONE DEL VENETO

Amundi
ASSET MANAGEMENT

PIRELLI RE

investire

MDF

PECK

ONGOING PARTNERSHIPS WITH INVESTORS AND DEVELOPERS (OVER THE LAST 10 YEARS)

KERVIS

COLOMBO 24



ARCO



OASI ISOLA



VALLISNERI



CESARIANO



GIOBERTI



ARDIAN

VIA VENETO 89



VILLA EMILIANI



ROMAGNOSI



UFFICI ARDIAN



VIA DEL CORSO



CIRCOLO DEGLI SCACCHI



Hines

PHILIPS HEADQUARTERS



VIA MAZZINI



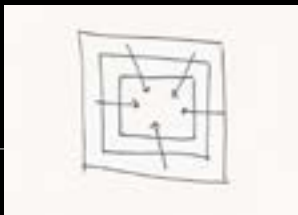
SPIGA 26



AURA LIVING



MAN. INTERIOR



TORRE TROTTO



KRYALOS

WHITE MOON



PORTA NUOVA



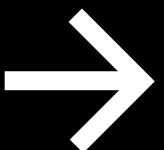
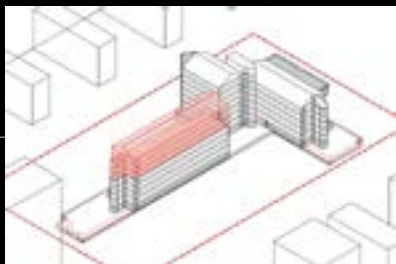
FLAVIO GIOIA



TORRE TURATI



SUZZANI



2016

2017

2018

2019

2020

2021

2022

2023

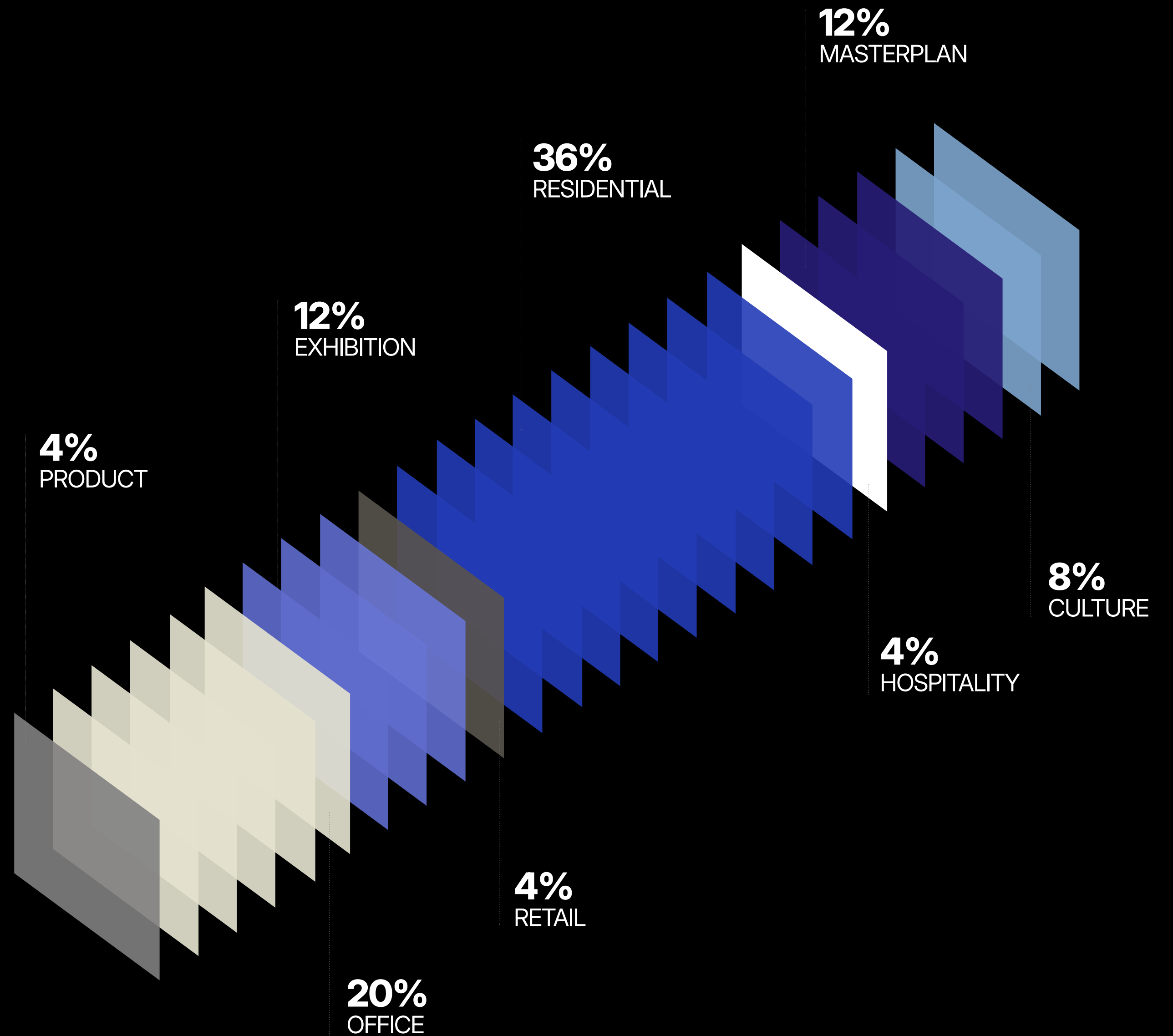
2024

2025

projects

THE PRACTICE WORKS ACROSS A WIDE RANGE OF ARCHITECTURAL SECTORS.

RESIDENTIAL PROJECTS FORM THE CORE OF THEIR WORK, ALONGSIDE OFFICES, URBAN MASTERPLANS AND CULTURAL SPACES. RETAIL, HOSPITALITY, EXHIBITION AND PRODUCT DESIGN ROUND OFF A PORTFOLIO THAT SPANS DIFFERENT SCALES, PROGRAMMES AND CONTEXTS.



residential

/YEAR	/NAME	/LOCATION	/PROJECT COST	/AREA
ONGOING	BRESCIA URBAN LIVING	BRESCIA, ITALY	-	-
ONGOING	VIALE LAZIO	MILAN, ITALY	-	-
ONGOING	TORRE TURATI	MILAN, ITALY	€ 14M	SL SQM 9.304
ONGOING	VIA BERUTO	MILAN, ITALY	€ 44M	GBA SQM 12.700
ONGOING	VIALE UMBRIA	MILAN, ITALY	€ 10M	GBA SQM 3.830
ON GOING	TROTTO TOWER	MILAN, ITALY	€ 42M	GBA SQM 19.045
ONGOING	VIA CASTEL MORRONE	MILAN, ITALY	€ 10M	GBA SQM 4.000
ONGOING	PALAZZO POZZI	MILAN, ITALY	€ 44.2M	GBA SQM 25.400
2023	VIA DEI MISSAGLIA	MILAN, ITALY	€ 140M	GBA SQM 120.000
ONGOING	VIVACERTOSA	MILAN, ITALY	€ 29.9M	GBA SQM 24.350
ONGOING	VIA VALGARDENA 17	MILAN, ITALY	€ 7M	-
ONGOING	VIA PONTENUOVO	MILAN, ITALY	€ 10M	-
ONGOING	VIA BENADIR	MILAN, ITALY	€ 34M	-
ONGOING	VIA VALLISNERI 10	MILAN, ITALY	€ 13M	-
ONGOING	EX MACELLO	MILAN, ITALY	€ 48M	SL SQM 18.000
ONGOING	VIA CRESPI 10	MILAN, ITALY	€ 630K	-
ONGOING	RESIDENZE MERIDIANA	BOLOGNA, ITALY	€ 215K	-
2025	OASI ISOLA	MILAN, ITALY	€ 17M	GBA SQM 14.970

residential

/YEAR	/NAME	/LOCATION	/PROJECT COST	/AREA
ONGOING	EAST TOWN	MILAN, ITALY	€ 7.9M	GBA SQM 8.400
ONGOING	VIA SAVONA	MILAN, ITALY	€ 4.5M	GBA SQM 11.800
2025	PALAZZO RAGGI	ROME, ITALY	-	GBA SQM 18.000
ONGOING	TORRE FUTURA	MILAN, ITALY	€ 32M	GBA SQM 14.700
ONGOING	AURA LIVING	SESTO, ITALY	€ 84M	GBA SQM 102.000
ONGOING	VIA FOLLI	MILAN, ITALY	€ 19M	GBA SQM 20.036
2018	VIA COLOMBO	MILAN, ITALY	€ 3.3M	GBA SQM 17.000
ONGOING	GATTAMELATA RESIDENZE	MILAN, ITALY	-	GBA SQM 11.000
2024	RESIDENZE SOCIALI	BOLOGNA, ITALY	-	-
2022	UPTOWN R2 - R3	MILAN, ITALY	€ 61M	GBA SQM 63.000
2022	VIA ARCO 2	MILAN, ITALY	€ 3.5M	GBA SQM 2.800
2022	EX RIO AREA	ISEO, ITALY	€ 16M	GBA SQM 17.500
2020	VIA NAZARIO SAURO	MILAN, ITALY	-	GBA SQM 9300
2020	VIA PAGANO 12	PARATICO, ITALY	-	GBA SQM 2070
2009	PIRANESI HOUSING	MILAN, ITALY	-	GBA SQM 2000
2009	CENNI SOCIAL HOUSING	MILAN, ITALY	-	GBA SQM 25000
2007	L HOUSE / MAISON LEDES	PARIS, FRANCE	€ 6M	-

offices

/YEAR	/NAME	/LOCATION	/PROJECT COST	/AREA
2018	VILLA EMILIANI	ROME, ITALY	€ 630K	GBA SQM 14.600
2024	VILLA PATRIZI	ROME, ITALY	€ 240M	GBA SQM 128.500
2023	SEDE SCHINDLER	MILAN, ITALY	€ 15.6 M	SL SQM 8.980
2022	VIA VENETO 89	ROME, ITALY	€ 27M	GBA SQM 20.700
2022	LARGO NUVOLARI	MILAN, ITALY	€ 23M	-
2021	SPIGA 26	MILAN, ITALY	€ 17M	GBA SQM 9.500
2021	ARIES OFFICES	MILAN, ITALY	-	GBA SQM 200
2021	ARDIAN OFFICES	MILAN, ITALY	-	GBA SQM 1150
2021	WHITE MOON	MILANO, ITALY	€ 20.5M	GBA 30.400 SQM
2020	MAZZINI 9/11	MILAN, ITALY	€ 12M	GBA SQM 11.390
2020	B-SWITCH	MILAN, ITALY	€ 90M	GBA SQM 64.000
2017	CORSO PORTA NUOVA	MILAN, ITALY	€ 32M	GBA SQM 31.200
2017	VIA PALEOCAPA 7	MILAN, ITALY	€ 630K	GBA SQM 10.500
2013	SARCA 235	MILAN, ITALY	€ 14M	GBA 22.000 SQM
2009	FOSTER WHEELER HQ	MILAN, ITALY	€ 12M	GBA SQM 38.500
2009	ZURICH HQ	MILAN, ITALY	€ 40M	GBA SQM 51.700

cultural&exhibition

/YEAR	/NAME	/LOCATION	/AREA
2024	NEIGHBORHOOD FOR EDUCATIONAL WONDER	UKRAINE	-
2024	PAC - METAL PANIC	MILAN, ITALY	-
2024	VILNIUS SCHOOL	VILNIUS, LITHUANIA	-
2024	SCUOLA INFANZIA TAGLIABUE	MILAN, ITALY	-
2023	MANIFATTURA TABACCHI	TURIN, ITALY	-
2023	IULM	MILAN, ITALY	-
2023	SCUOLA BRESCIA	BRESCIA, ITALY	-
2023	SEJONG CENTER SEOUL	SEOUL, KOREA	-
2022	BOSCO DELLA MUSICA	MILAN, ITALY	-
2022	IGUZZINI - STATALE	MILAN, ITALY	SQM 9.000
2022	IGUZZINI - BRERA	MILAN, ITALY	-
2018	MUSEO DI STORIA NATURALE	MILAN, ITALY	-
2015	EXPO GATE	MILAN, ITALY	SQM 2.000
2014	WERDI VAGNER	VERONA, ITALY	SQM 1.000
2014	PALLADIO MUSEUM	VICENZA, ITALY	GBA SQM 1000
2013	CASCINA MERLATA SCHOOL	MILAN, ITALY	GBA SQM 6300
2013	TDM6/MOVE: THE GAME IS (NEVER) OVER	MILAN, ITALY	SQM 8.800

cultural&exhibition

/YEAR	/NAME	/LOCATION	/AREA
2012	VIGORELLI MILANO	MILAN, ITALY	SQM 9.000
2011	USI-SUPSI	MILAN, ITALY	SQM 37.000
2011	TENDA EX VOTO	MILAN, ITALY	-
2009	MEDAGLIA D'ORO ALL'ARCHITETTURA ITALIANA	MILAN, ITALY	SQM 600
2008	CARLO SCARPA E L'ORIGINE DELLE COSE	VENICE, ITALY	SQM 200
2006	CONFLITTI	SALERNO, ITALY	-
2004	STANZE DI LUCE TRA VARESE E NEW YORK	VARESE, ITALY	-
2003	PIERO PORTALUPPI	MILAN, ITALY	SQM 1200
1994	FIDELIO	BERLIN, PARIS, JERUSALEM	SQM 1200

hospitality

/YEAR	/NAME	/LOCATION	/AREA
2024	VILLA PATRIZI	ROME, ITALY	SQM 128.500
2023	MANIN	MILAN, ITALY	SQM 36.926
2023	CIRCOLO DEGLI SCACCHI	ROME, ITALY	SQM 3.700
2022	HOTEL DEL CORSO	ROME, ITALY	SQM 9.000
2018	RESORT IN FRANCIACORTA	LAGO D'ISEO, ITALY	SQM 8.700
2019	NH SANTO STEFANO	TORINO, ITALY	SQM 1.000
2018	NH AMBASSADOR NAPOLI	NAPLES, ITALY	SQM 51.000
2019	NH GRAN CONVENTO AMALFI	AMALFI, ITALY	SQM 700
2011	RESORT IN UMM AL-QAYWAYN	UMM AL-QAYWAYN, UAE	SQM 5.980
2011	RESORT IN PUERTO CAREYES	PUERTO CAREYES, MEXICO	SQM 5.670

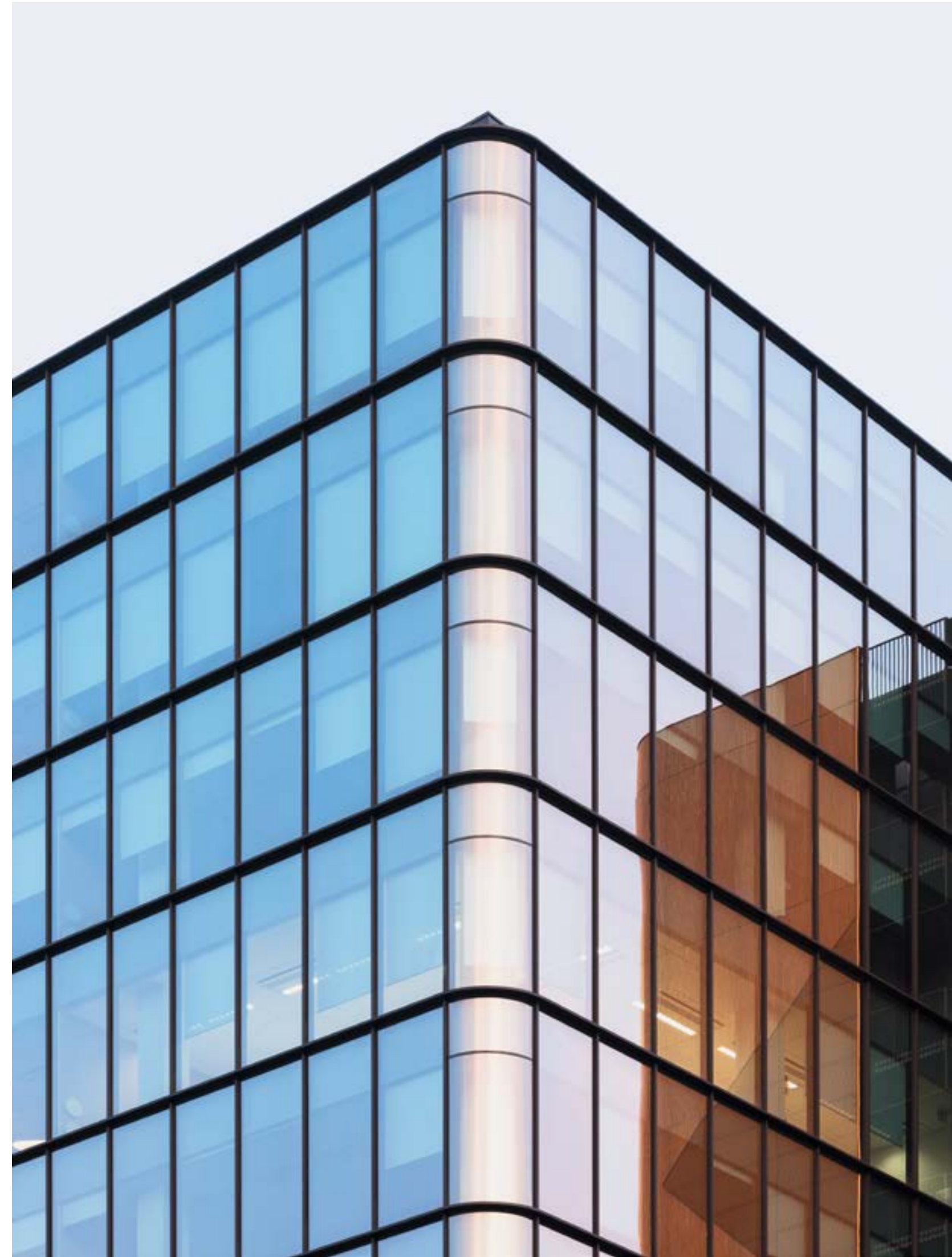
retail

/YEAR	/NAME	/LOCATION	/AREA
2020	TRUSSARDI SHOP	MILAN, ITALY	GBA SQM 350
2019	RECEPTION FOR OLIVETTI STORE	VENICE, ITALY	SQM 25
2018	AGENZIA CAPE COD	VICENZA, ITALY	SQM 100
2016	PICCOLO PECK	MILAN, ITALY	SQM 350
2014	PECK SEOUL	SEOUL, SOUTH KOREA	SQM 850
2009	BOOKSHOP LA SCALA	MILAN, ITALY	SQM 200
2008	LUCEPLAN CORPORATE IMAGE	SEVERAL CITIES, WORLD	-

masterplan

/YEAR	/NAME	/LOCATION	/AREA
2019	ESERCIZI D'AUTORE	SASSUOLO, ITALY	-
2015	PROGETTO FLAMINIO	ROME, ITALY	GBA SQM 51.000
2014	TIANJIN BINHAI URBAN DEVELOPMENT	TIANJIN, CHINA	SQM 500.000
2011	TAICHUNG	TAICHUNG, TAIWAN	SQM 67
2009	PARCO DELLE ENERGIE	BRINDISI, ITALY	SQM 215
2009	PIAZZA VERDI	LA SPEZIA, ITALY	SQM 9.700
2008	FARO DE SATÉLITE	MEXICO CITY, MEXICO	SQM 700





Sarca 235 | Hines | Milan, Italy | 2013-2017



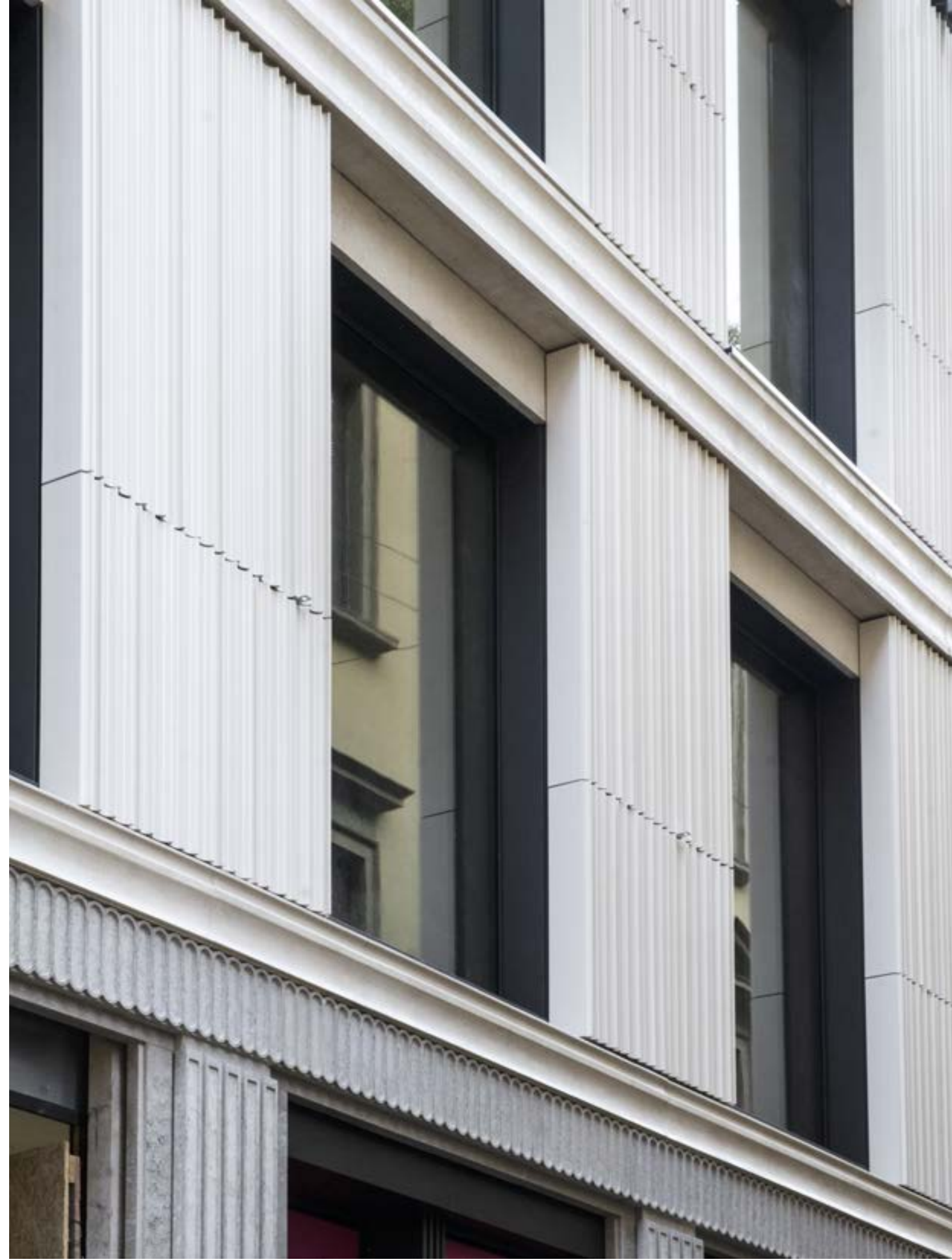






















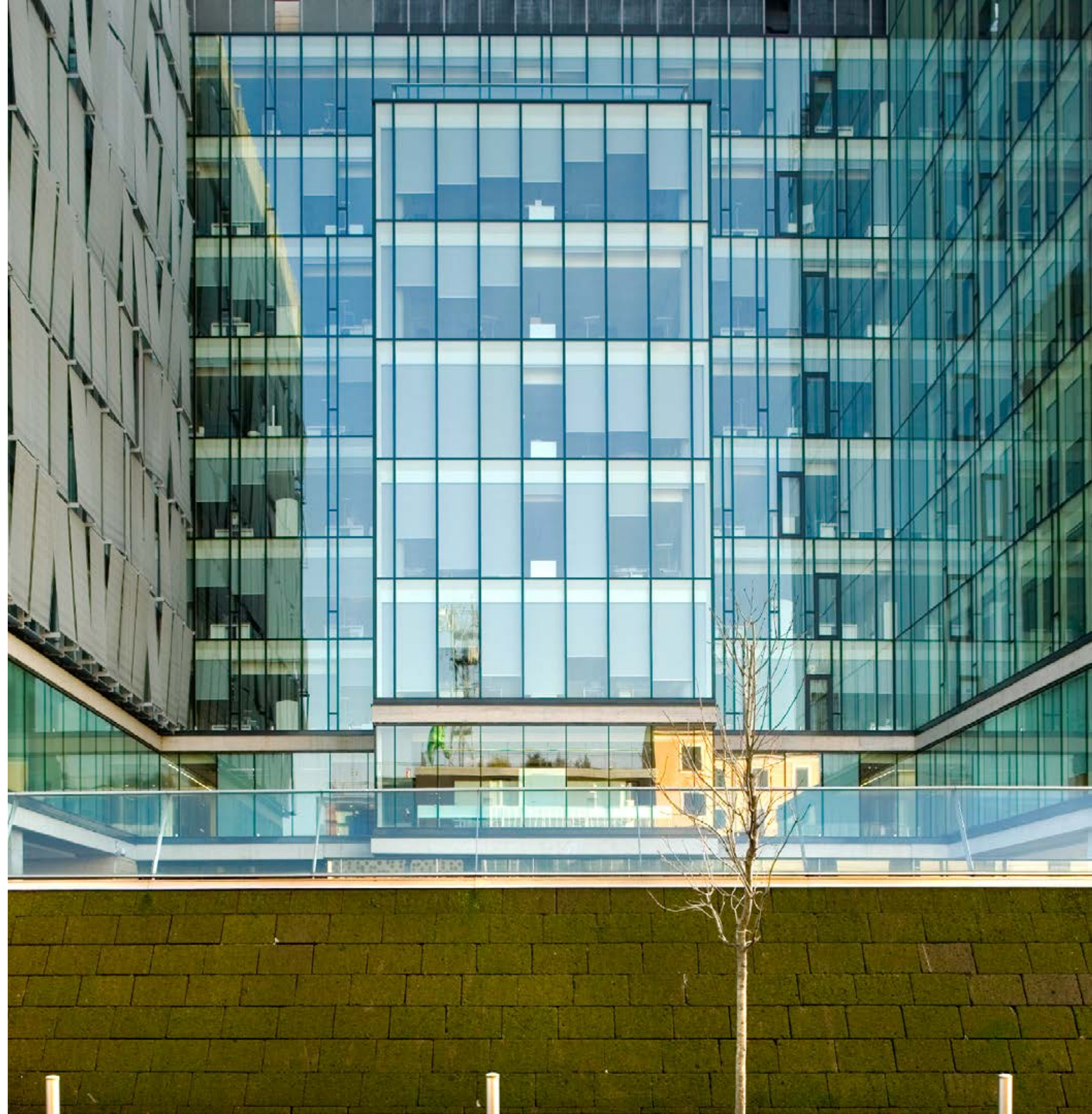






































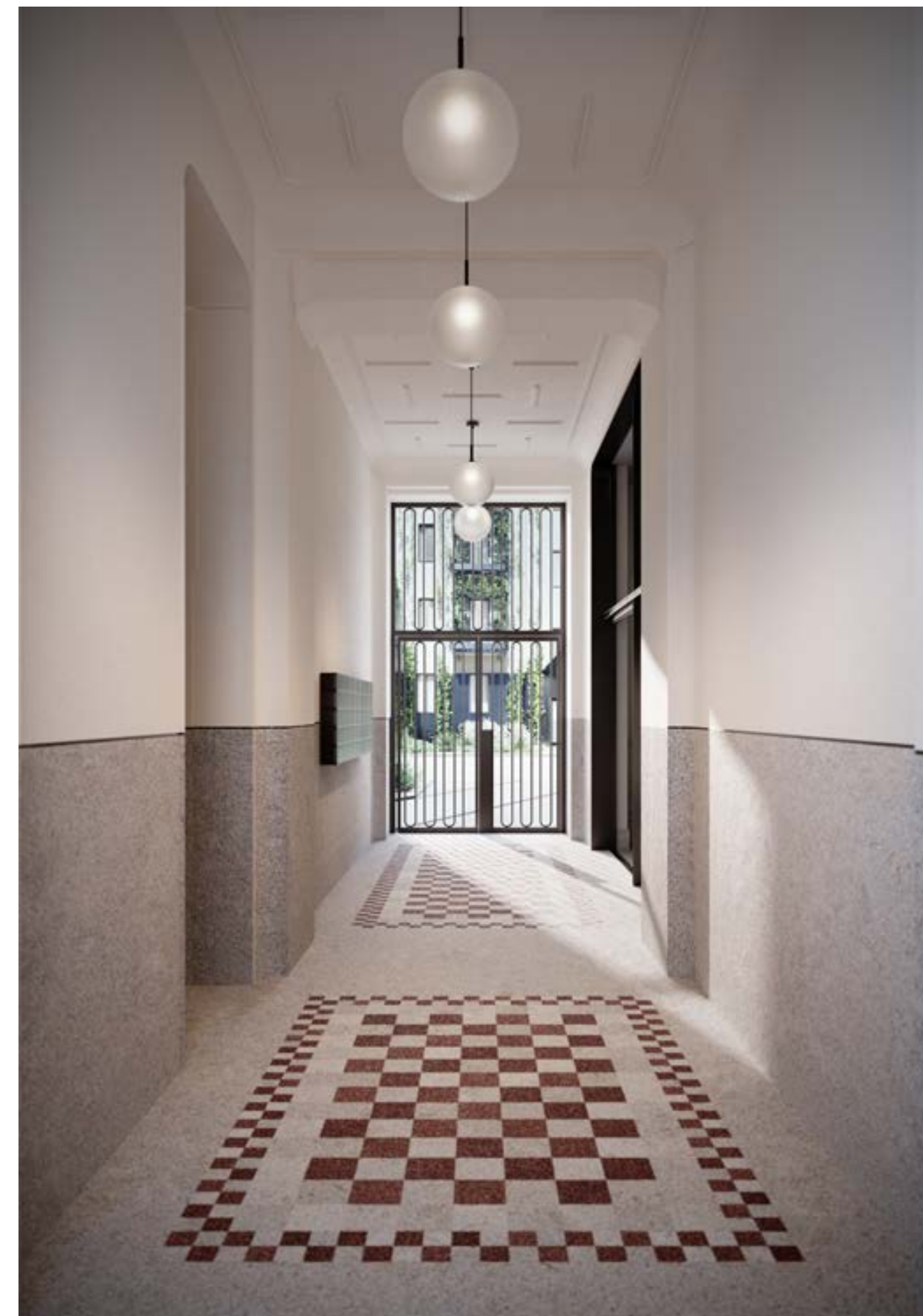








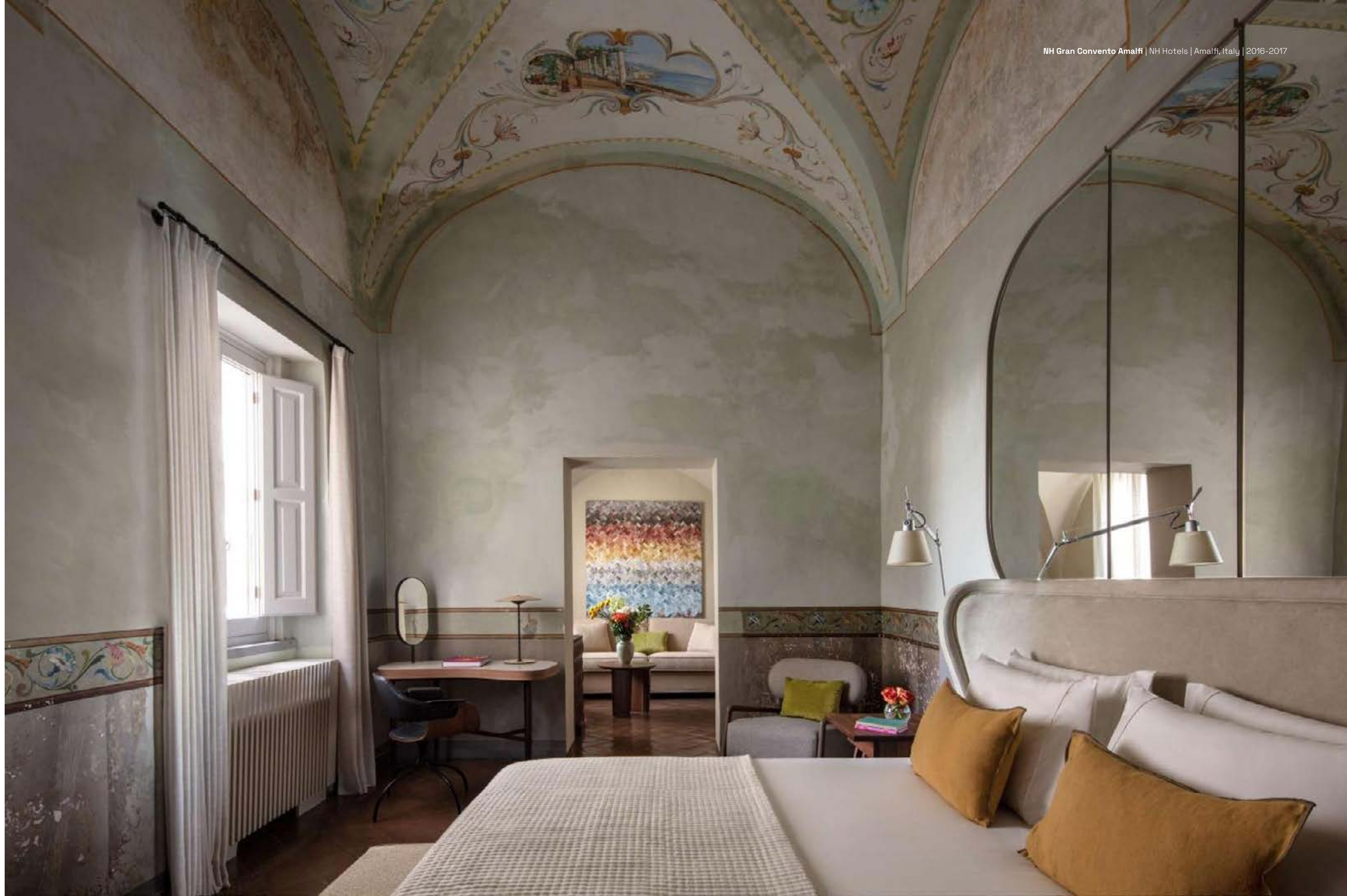


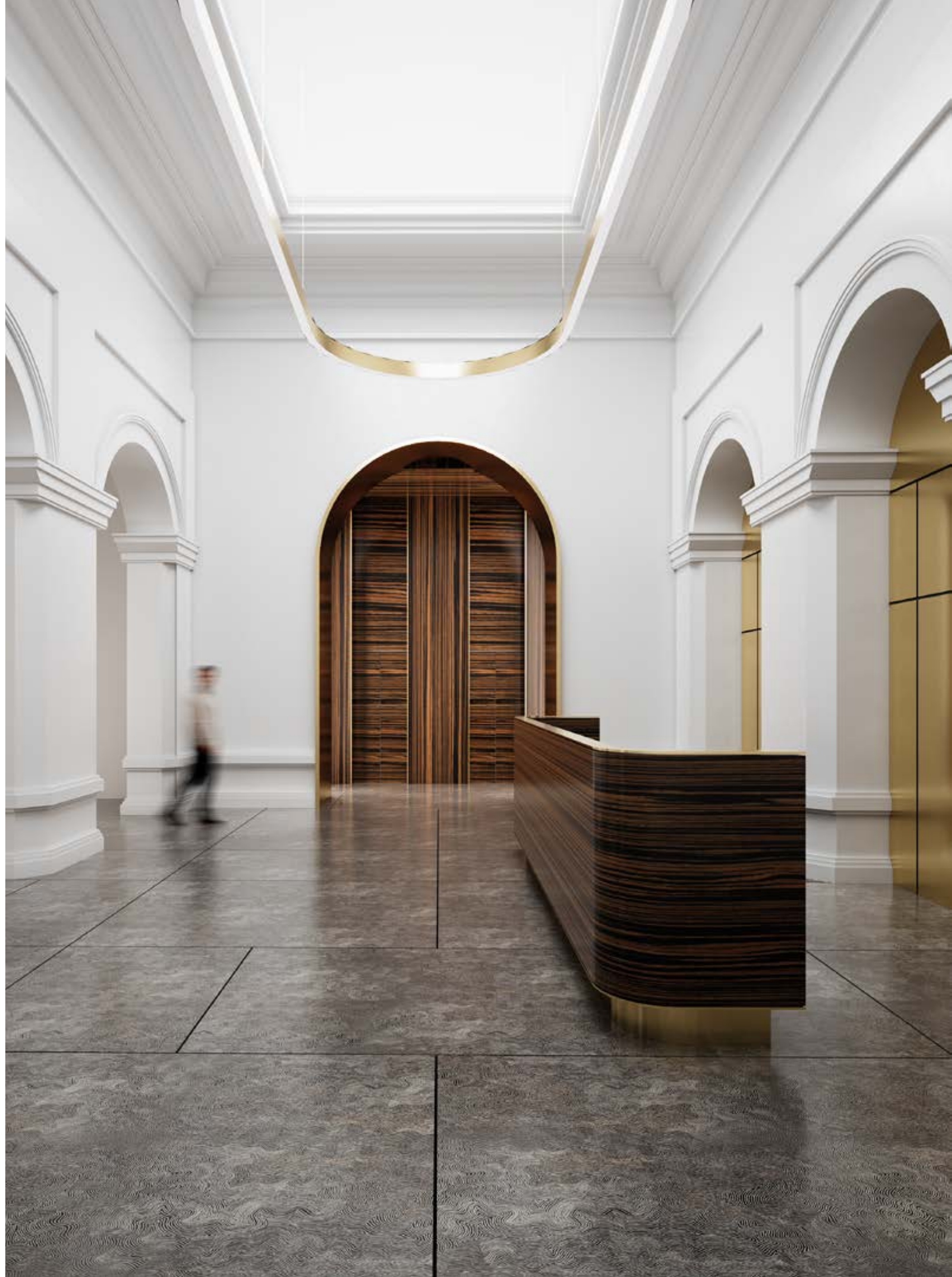






























IST. NAZ. ASSICVR. A.FVND. A. 1928. VI.

91



89







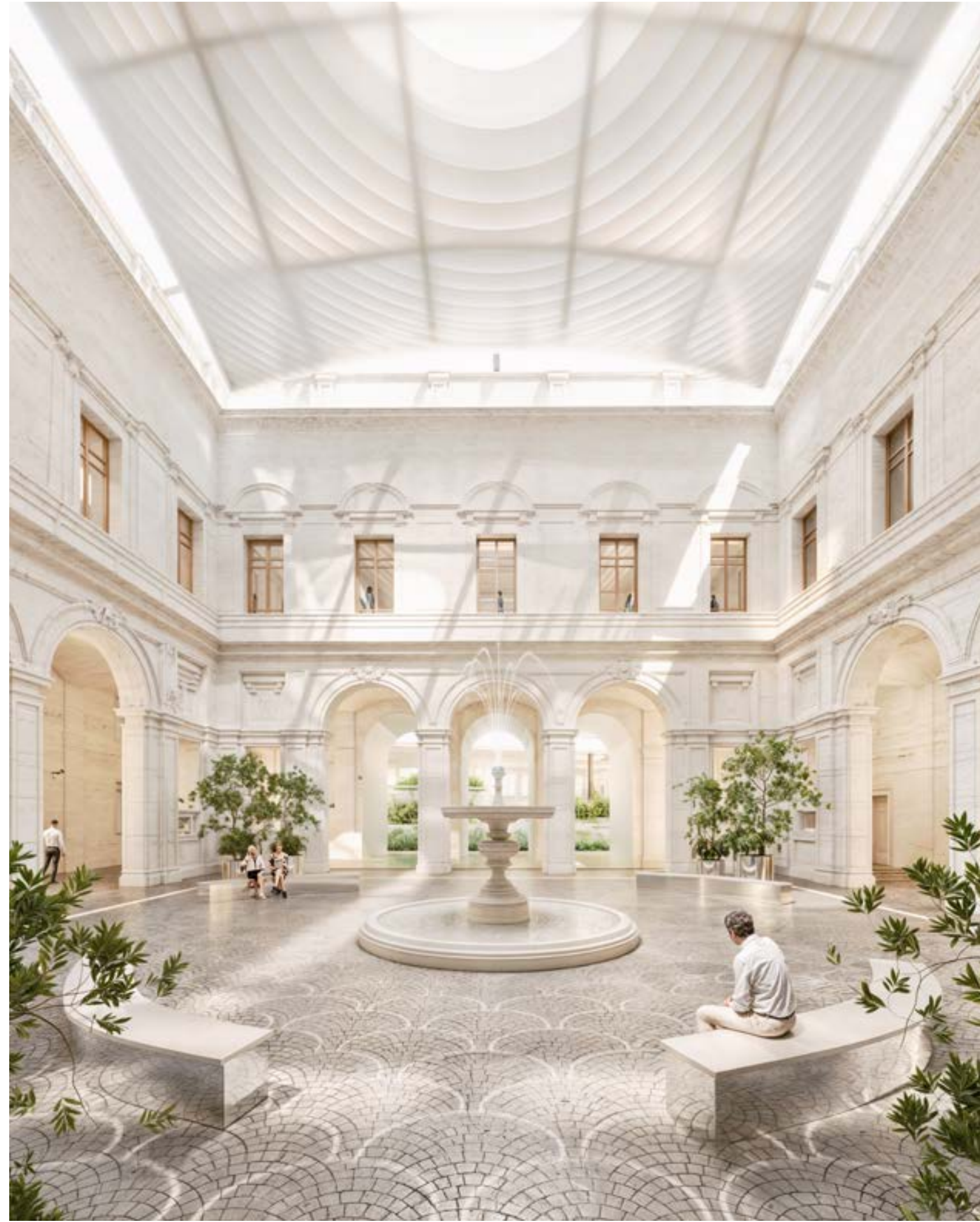


















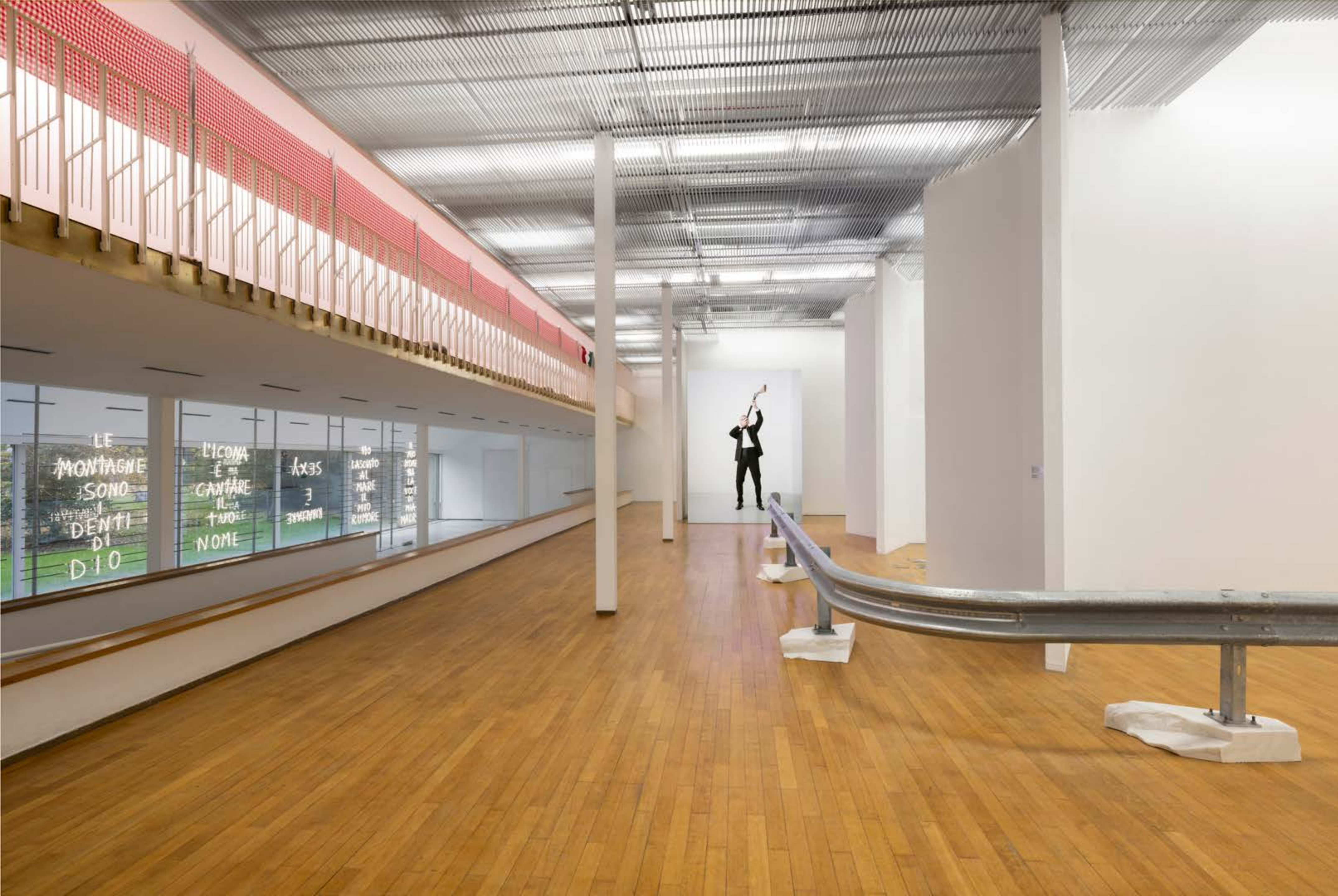
Ex Area Falck | MilanoSesto S.p.A. | Milan, Italy | 2020-ongoing











LE MONTAGNE SONO I DENTI DI DIO
L'ICONA È CANTARE IL TUO NOME
SEX È QUANTO AL MARE IL MIO RUMORE
IL MIO NOME HA LA VOCE DI UN MACK









ISCANDURRAJ